

Stratos exudes quality, beauty and high-performance. It's designed to take high-volume POS scanning to new heights so there's no better time to replace your old flatbed and existing dual-plane scanners or upgrade to a scanner/scale.

Call us today, or go to www.metrologic.com



MS2020
full size scanner with scale



MS2021
full size scanner only



MS2022
compact size scanner only



OPERATIONAL

Light Source	Visible Laser Diode 650 nm \pm 10 nm
Laser Power - (horz/vert)	1.25 mW / 2.25 mW
Depth of Scan Field - (horz)	0 mm - 152 mm (0" - 6.0") for 0.33 mm (13 mil) bar code
Depth of Scan Field - (vert)	0 mm - 216 mm (0" - 8.5") for 0.33 mm (13 mil) bar code
Scan Speed	6000 scan lines per second
No. of scan lines - (horz/vert)	68 (40 / 28)
Motor Speed - (horz/vert)	4800 / 6000 RPM
Sides Read	6
Scan Zone	360°
Minimum Bar Width	0.152 mm (6.0 mil)
Decode Capability	All standard 1-D bar codes, RSS-14, RSS-Expanded, RSS-14 Limited
System Interfaces	RS-232, Aux. RS-232, IBM468x/469x, USB (low speed and full speed), OCIA
Print Contrast	35% minimum reflectance difference
Number Characters Read	Up to 80 data characters
Roll, Pitch, Yaw	360°, 60°, 60°
Speaker Operation	7 tones or no beep; - 3 volume settings
Indicators (LED)	Blue = laser on, ready to scan; White = good read, decoding

MECHANICAL

Length	MS2020 (full size scanner with scale)	508 mm (20.0")
	MS2021 (full size scanner only)	508 mm (20.0")
	MS2022 (compact size scanner only)	420 mm (16.5")
Width		286 mm (11.3")
Depth (below counter)		100 mm (4.0")
Height (above counter)		178 mm (7.0")
Weight	MS2020 (full size scanner with scale)	11.8 kg (26 lbs)
	MS2021 (full size scanner only)	7.7 kg (17 lbs)
	MS2022 (compact size scanner only)	7.3 kg (16 lbs)

SCALE CAPACITIES

Capacity	15.0 kg (30.0 lb)
Minimum increment	0.005 kg (0.01 lb)
Maximum static weight	68 kg (150 lb)
Adjustments required	Calibration only

Input Voltage	5.2 V @ 1.5 Amps / 12 V @ 1.5 Amps
Power	13.5 W (when scanning); 5 W (standby)
Operating Current	900 mA (5V) / 700 mA (12V)
DC Transformers	Class II; 5 VDC @ 1.5 A; 12 VDC @ 1.5 A
Laser Class	CDRH & IEC: Class 1 according to IEC 60825-1:1993+A1:1997+A2:2001
EMC	FCC, ICES-003 & EN55022 Class A

Operating Temperature	0°C to 40°C (32°F to 104°F)
IP Rating	IP 55
Light Levels	4842 Lux (450 footcandles)
Storage Temperature	-40°C to 60°C (-40°F to 140°F)
Humidity	5% to 95% relative humidity, non-condensing
Contaminants	Sealed to resist airborne particulate contaminants
Ventilation	None required



www.metrologic.com

USA
Tel. 1.800.ID.METRO
info@metrologic.com

Asia
Tel. 65.6842.7155
info@sg.metrologic.com

AOA (only)
Tel. 1.617.806.1400
info@aoa.metrologic.com

China (only)
Tel. 86.512.62572511
info@cn.metrologic.com

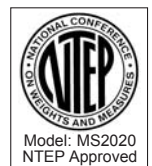
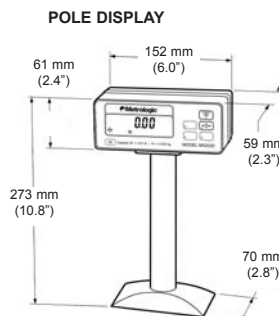
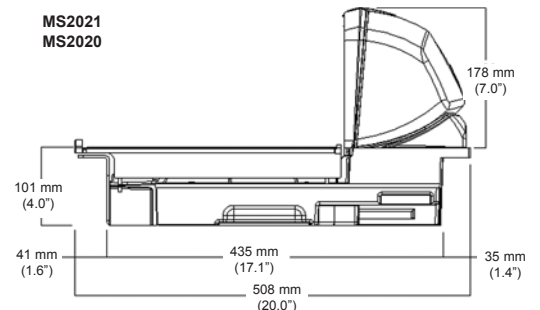
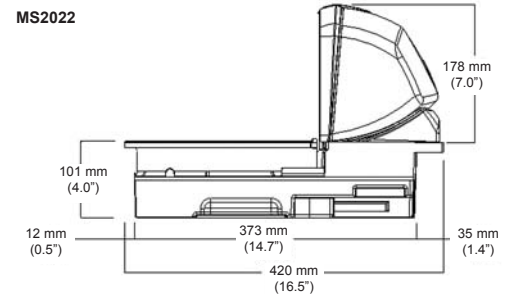
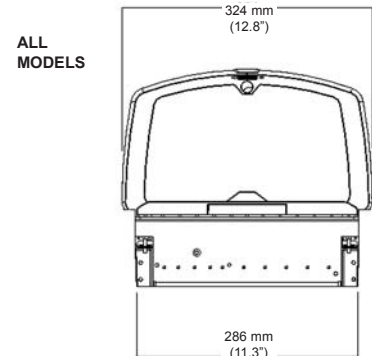
South America
Tel. 5511.5182.7273
info@sa.metrologic.com

Japan (only)
Tel. 81.03.3839.8511
info@jp.metrologic.com

Brazil (only)
Tel. 5511.5182.8226
info@br.metrologic.com

Europe
Tel. 49.89.89019.0
info@europe.metrologic.com

Dimensions



Sunrise 2005 Compliant



Specifications subject to change without notice.
Printed U.S.A., Copyright February 2004
Metrologic, All rights reserved.



DS2020

ISO 9001:2000

Metrologic Instruments, Inc. | 90 Coles Road | Blackwood, NJ 08012-4683
Telephone 856-228-8100 or 1-800-ID-METRO | Fax 856-228-6673

Stratos



Stratos®

Metrologic's high performance
6-sided, bi-optic in-counter scanner/scale series.

**Designed for the most demanding, high volume,
supermarket and point-of-sale applications.**

 **Metrologic®**



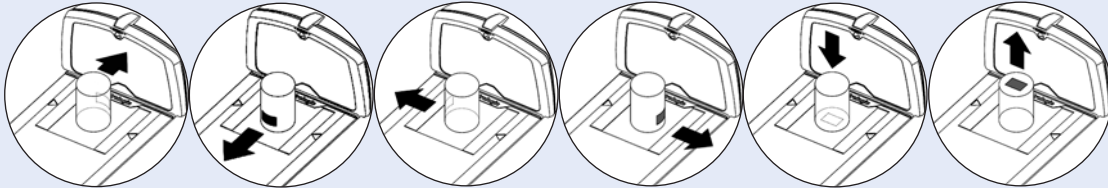
Designed
for Maximum
Speed, Uptime and
Return on Investment.

Speed:

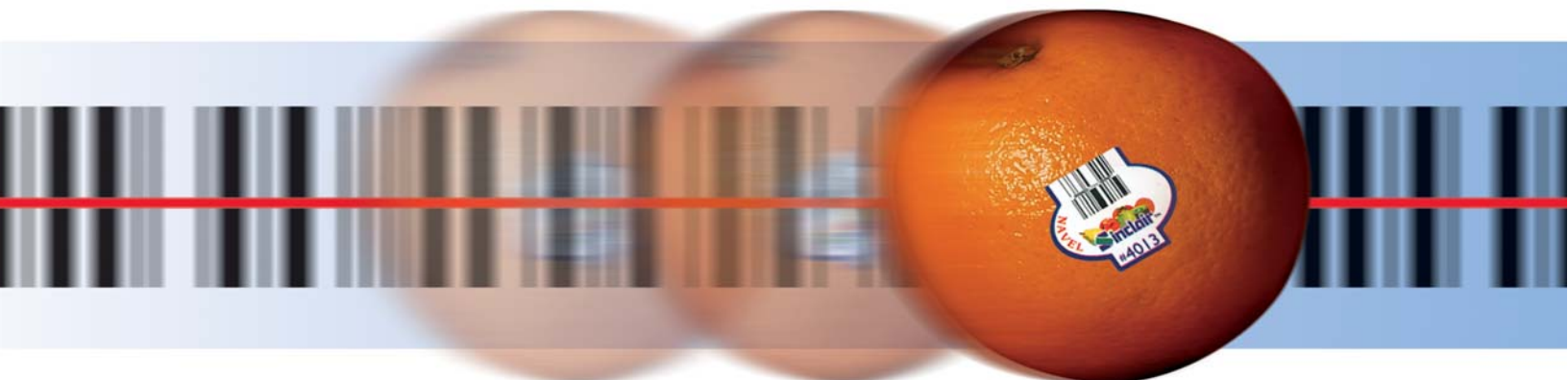
Because you don't want your customers waiting in line. Time is money. And nowhere is that more apparent than at the checkout. With Stratos**SCAN**™ 6-sided, 360° scanning, advanced Stratos**SPHERE**™ decoding software, 6000 scans per second, and a class-leading 68 scan lines, Stratos' performance is sure to get customers through fast. And thanks to Stratos**SCAN**, operators also benefit from minimized fatigue and stress associated with twisting and turning products.

Stratos**SCAN**™ Stratos**SWAP**™ Stratos**SCHOOL**™ Stratos**SCOPE**™ Stratos**ST**

Bar Codes Can Face All 6-Sides, 360° for Maximum Performance and Speed



SPEED



Uptime:

Stratos is constructed like a tank and tested to withstand the rigors of today's checkout environment. But we've faced reality, scanners sometimes malfunction, so Metrologic invented Stratos**SWAP**™ modular optics engine technology – small, pre-aligned, field-replaceable modules that pop into place in a matter of minutes. What's more, Stratos' vertical and horizontal scanning zones operate totally independent, one from another – a feature we call Stratos**SYNC**™.

Return On Investment:

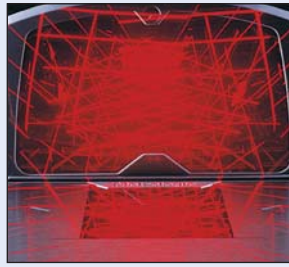
Because we don't want you waiting to realize increased profit. It starts with value pricing. Then we add features like Stratos**SCHOOL**™ operator training software and Stratos**STATS**™ code checking software to monitor characteristically hard-to-scan codes, a solid "bumper to bumper" warranty and, because every dollar counts, our light 15 pound (non-scale) unit even costs less to ship.

ATS™ Stratos**SPHERE**™ Stratos**SYNC**™ Stratos**SCAN**™ Stratos**SWAP**™ Stratos**SC**

Easy Installation - Easy Maintenance for Maximum Uptime



> **Stratos**SWAP****
Field replaceable optical scanning modules can be replaced in minutes.

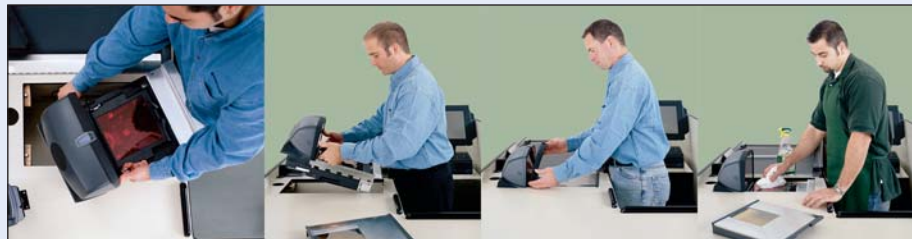


> **Stratos**SYNC****
Independent vertical and horizontal scan zones operate independent from one another.

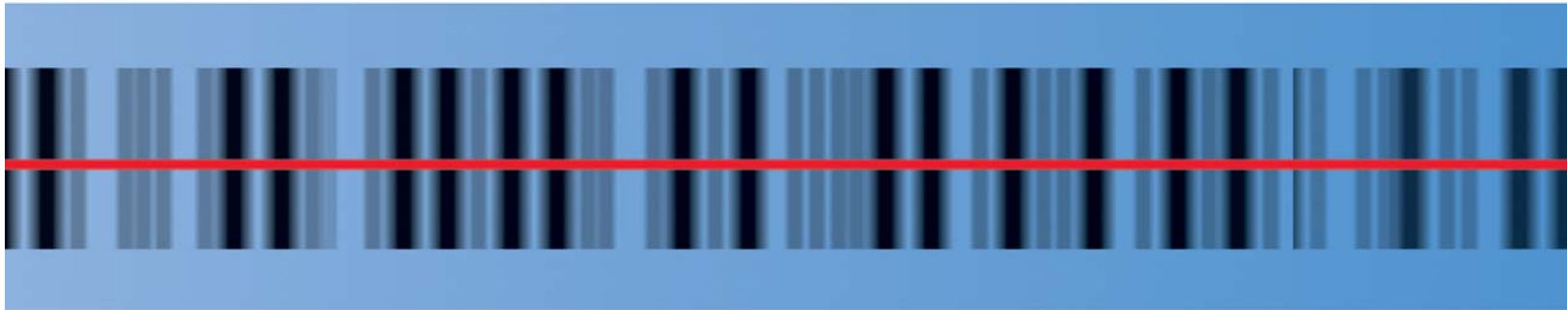


> **Stratos**SCOPE****
Visual diagnostic indicator provides immediate, easy-to-read feedback on scanner condition.

> **Easy to Install or Replace**
Fits existing counter openings. Drop in replacement for existing bi-optic scanners.



UPTIME



- > **StratosSCAN**
6-sided, 360° scanning minimizes product orientation
- > **StratosSPHERE Decoding Software**
Reads poor quality and damaged bar codes
- > **BackPack™**
Customer interaction peripheral system
- > **Spill Channel**
Channels spills and debris away reducing maintenance
- > **Flash ROM**
Upgrade latest software enhancements on-site
- > **Powered Aux Port**
Connect hand-held scanner for large or bulky items
- > **RSS-14 Decoding**
Decodes RSS-14, RSS Limited and RSS Expanded emerging symbologies
- > **Integrated Scale**
Factory integrated or field upgradeable scale
- > **Loud Speaker**
3 volume/7 tone settings can be heard in all environments
- > **Easy Programming**
Windows® based utility or simple bar code setup
- > **Fully Automatic**
"No touch" infrared wake up from power save modes
- > **EAS Deactivation**
Electronic Article Surveillance (EAS) included

Features Set Stratos Apart

Bright Blue and White LEDs
Easy to see scan and good read indicators.

Multi-function Push Buttons
Operator-side volume, sleep and scale zero controls.

Field Replaceable Vertical Window
Quickly remove vertical window for cleaning or replacement.

Debris Guard
Eliminates debris from interfering with scale operation.

Stainless Steel Platter
Easily removed for cleaning, debris removal or replacement.

Scratch Resistant Window
Equipped with Diamonex® or Sapphire horizontal window.

High Impact Window Frame
Designed to withstand demanding POS environments.

Product Weight/Roll Bar
Reduces shrink from overhanging produce.

100 mm (4 in.) Below Counter Depth
Thinnest of all high performance, 6-sided bi-optic scanners.



ROI