

2D Imager

Scanner Manual
For PC



TABLE OF CONTENTS

First Look

- Getting Started
- Imager Configuration Manager
- Basic Operation
- Workspace Tabs

Current Settings

- User Preferences
- Imager Preferences
- Scanner Options

Symbologies

- UPC/EAN
- Code 128
- Code 39
- Code 93
- Code 11
- Interleave 2 of 5 (ITF)
- Discrete 2 of 5 (DTF)
- Codabar
- MSI
- Postal Codes
- Reduced Space Symbology (RSS)
- Composite
- 2D Symbologies
- Symbology-Specific Security Level

Getting Started

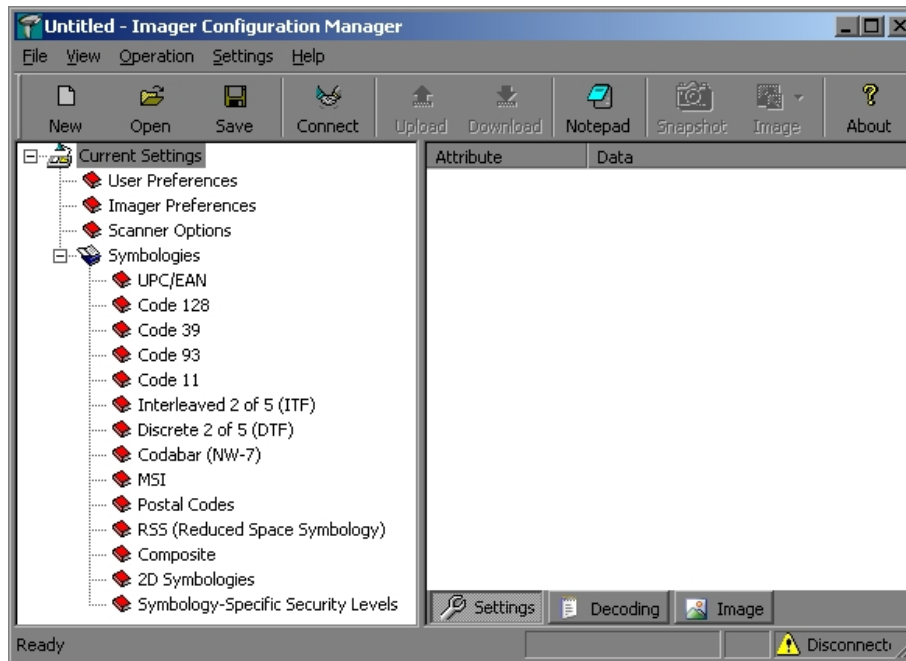
IMAGER CONFIGURATION MANAGER

Starting up

After loading up the Imager Configuration Manager, the ICM icon will appear in your system tray



ICM has a large workspace on the right, scanner settings on the left, function icons on the top, and workspace tabs beneath the work page.



Shutting down

Even when clicking the close program icon, ICM will remain running in the background until closed through the system tray icon. To do this, right click on the icon and select Exit.

Basic Operations

Along the top of the ICM are buttons that allow easy access to it's basic functions.

Configuration Profiles

With the ICM, you can create and save configuration profiles. These profiles contain all of your settings, so that you can switch between different groups of settings for different situations.



New

Selecting this icon will start a new configuration profile for your imager.



Open

Opens a previously saved configuration profile



Save

Saves your current settings into a configuration profile

Connection and scanner settings



Connect

Connects ICM to your scanner

(upload screenshot) **Upload**

Uploads settings from your scanner to ICM

(download screenshot) **Download**

Downloads the settings from ICM into your scanner



Notepad

Opens notepad to receive your scanned output

(Snapshot) **Snapshot**
(Description)

(Image ScreenShot) **Image**
(description)



About

Displays the version of the Imager Configuration Manager currently running, as well as the serial of your connected scanner, SNAPI DLL version, and Scanner Version.

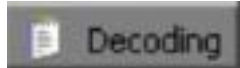
Workspace Tabs

Below the workspace area there are three different tabs that allow you to select different work space areas.



Settings

The settings workspace is shown by default. It shows each individual configuration of the section selected from the scanner settings selection on the left side.



Decoding

The Decoding page contains information about your most recent bar code scan. This information includes:

Image Capture Time - The amount of time in milliseconds the scanner took to capture an image.

Auto Exposure Execution Time - the amount of time in milliseconds the scanner required to calculate the appropriate values for exposure time, gain, and illumination. This is normally less than 1 ms.

Image Processing Time - the total image processing time, including image capture, image correction, identification of the various bar codes in the scanner's field of vision, and decoding each relevant bar code.

Barcode Processing Time - presents a synopsis of the bar code data, the symbology of the bar code, and the total amount of time in milliseconds of processing required for an individual bar code label.

(Image SS)

Image

The image page displays an image scanned by your imager. You can scan an image by pressing the scanner's trigger, the F3 key on your keyboard, or by clicking the Image Capture icon at the top of the ICM.

Barcode Symbologies

This section allows you to change settings for each symbology. After selecting a symbology from the scanner settings section on the left side, you can change the options for that symbology. To change any attribute's setting, double click it in the settings workspace on the right. Below is a list of supported symbologies with configurable settings.

1D Symbologies

- UPC/EAN
- Code 128
- Code 39
- Code 93
- Code 11
- Interleave 2 of 5 (ITF)
- Discrete 2 of 5 (DTF)
- Codabar
- MSI
- Postal Codes
- Reduced Space Symbology (RSS)
- Composite

2D Symbologies

- PDF417
- MicroPDF417
- Code 128 Emulation
- Data Matrix
- Maxicode
- QR Code

Troubleshooting

If your barcode doesn't scan:

Try scanning other barcodes. If other barcodes scan, you may need to enable the symbology of your barcode. You may also need cleaner barcodes, as barcodes that are dirty or printed badly may not scan well. When a barcode doesn't scan, start by placing the scanner as close as possible to your barcode, pull the trigger, and gradually move your scanner back away from the barcode.

If your scanner appears to the system as unrecognized:

Try unplugging the scanner and plugging it back in, or rebooting the system. You should also try to plug your scanner into a different port, as this issue may also be related to a faulty USB port.