

PT 9000/9000m PT 9150 CD-7220 Power & Setup

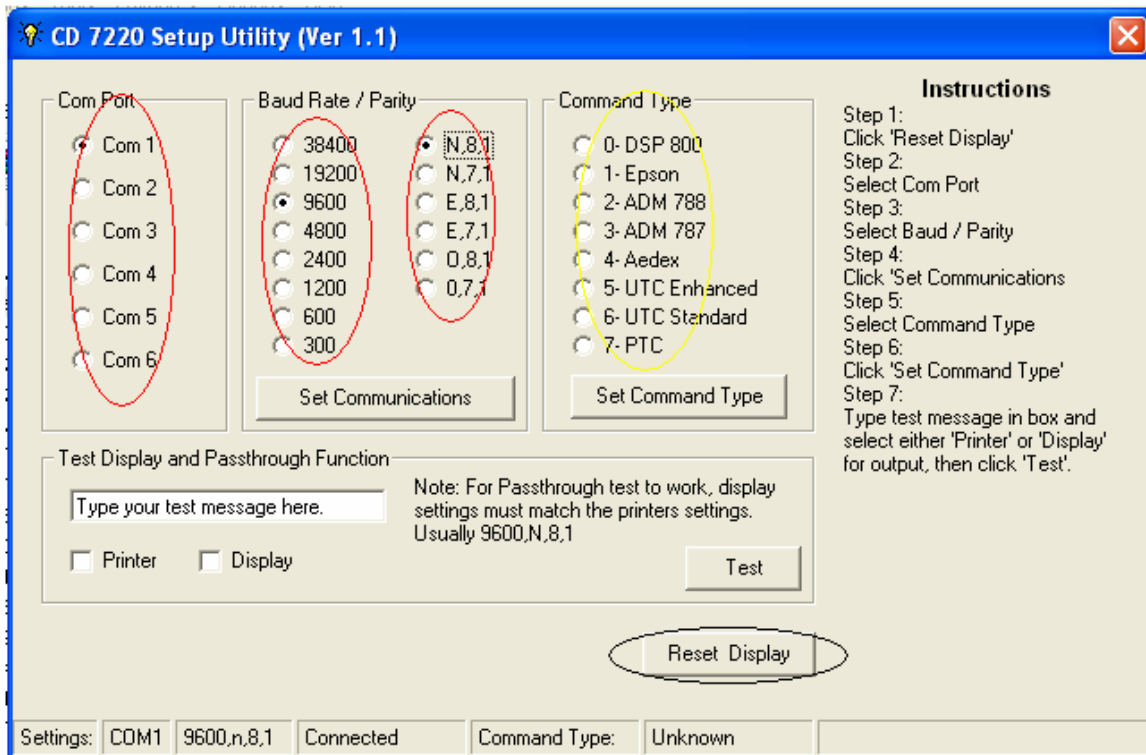
- JP8 – Powers COM 1(A)
- JP10 – Powers COM 4(D)
- JP9 – Powers COM 3(C)
- JP3 – CMOS

Pin assignments: 1 & 2	12 Volts
3 & 4	Off (Default)
5 & 6	5 Volts

This is used for powering up stand alone Customer Displays that do not have the external power supply adapter.

Please note that a printer should not be hooked up with a COM Port that is powered up

CD-7220 Quick-Setup



- 1) Choose com port.
- 2) Baud Rate that is desired. CD-7220 has a default of 9600.
- 3) Select Parity. CD-7220 is set to N,8,1
- 4) Command Type that the pole display unit communicates with the software or Apps. UTC Standard is the standard for most Epson and other pole displays.
**Note that other software's have different emulations and be advised to check software specifications as well.*
- 5) If unit does not respond or power up you may Reset Display. This will write information back to the EEPROM and will load default values to the unit.
- 6) Click Reset Display if you need to rest EEPROM.

Please read CD-7220 manual for more information on RS-232 commands and setup.